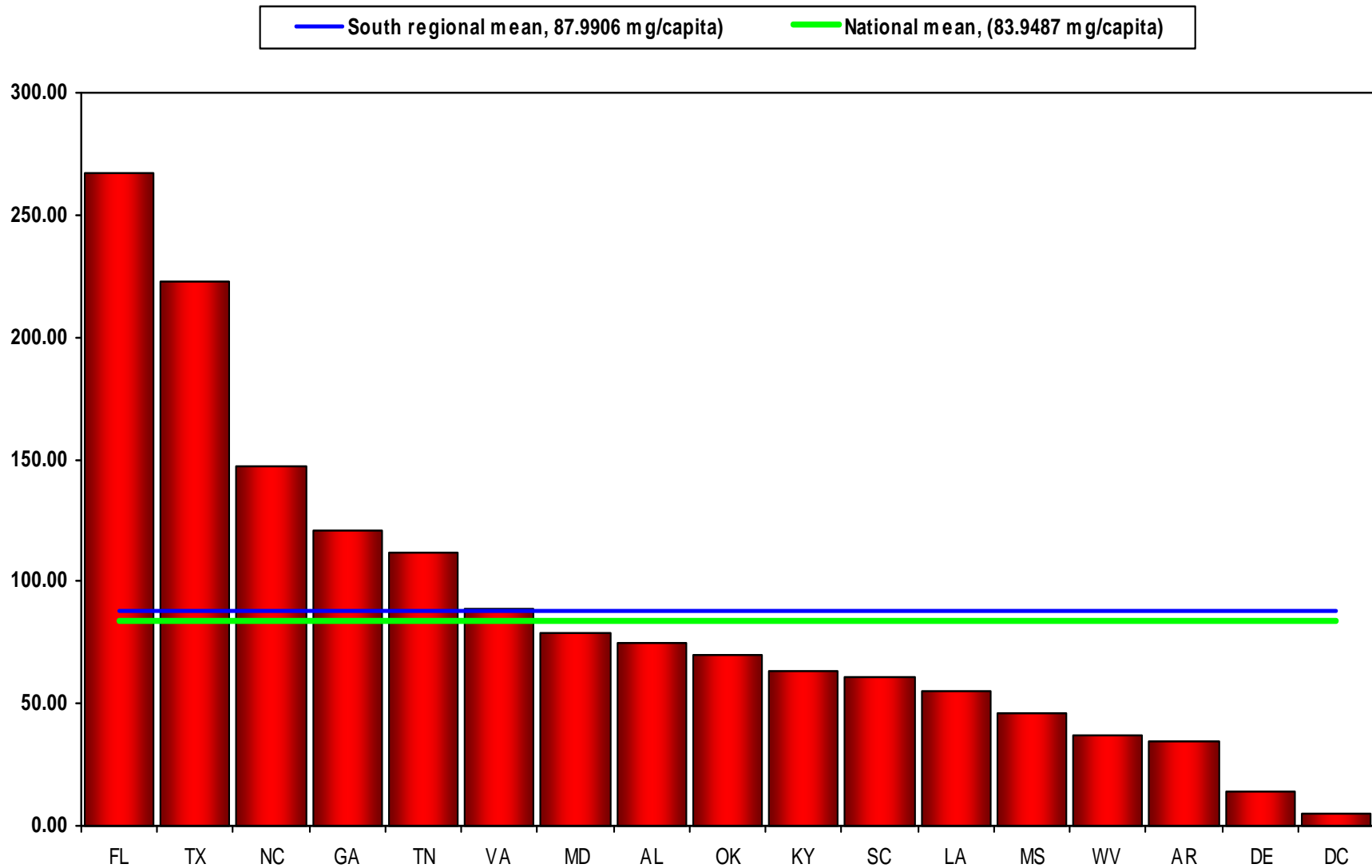


South Regional Consumption of Fentanyl, 2006



Source: U.S. Dept. of Justice, Drug Enforcement Administration, Office of Diversion Control
Pain & Policy Studies Group, 2008

South Regional FENTANYL Consumption, 2006: (mg/capita)

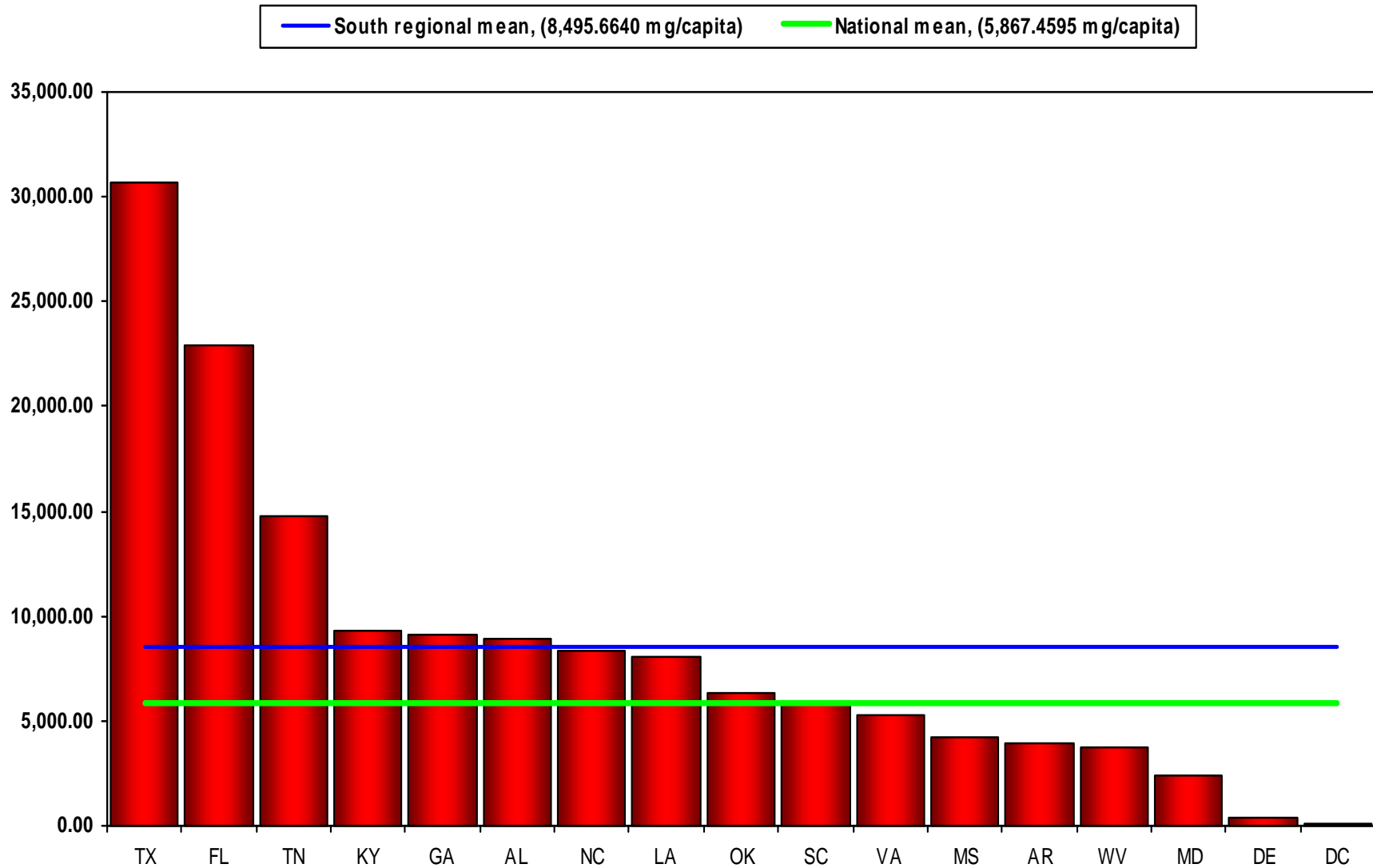
| | | |
|----|----------------------|----------|
| 1 | Florida | 266.7745 |
| 2 | Texas | 222.5277 |
| 3 | North Carolina | 147.4142 |
| 4 | Georgia | 120.8749 |
| 5 | Tennessee | 112.1246 |
| 6 | Virginia | 88.5849 |
| 7 | Maryland | 79.1244 |
| 8 | Alabama | 74.6541 |
| 9 | Oklahoma | 69.6152 |
| 10 | Kentucky | 63.2471 |
| 11 | South Carolina | 60.5880 |
| 12 | Louisiana | 54.8122 |
| 13 | Mississippi | 45.9757 |
| 14 | West Virginia | 36.7096 |
| 15 | Arkansas | 34.1121 |
| 16 | Delaware | 13.6346 |
| 17 | District of Columbia | 5.0664 |

PAIN & POLICY STUDIES GROUP



WHO Collaborating Center for
Policy and Communications in Cancer Care
University of Wisconsin Paul P. Carbone
Comprehensive Cancer Center

South Regional Consumption of Hydrocodone, 2006



Source: U.S. Dept. of Justice, Drug Enforcement Administration, Office of Diversion Control
Pain & Policy Studies Group, 2008

South Regional HYDROCODONE Consumption, 2006: (mg/capita)

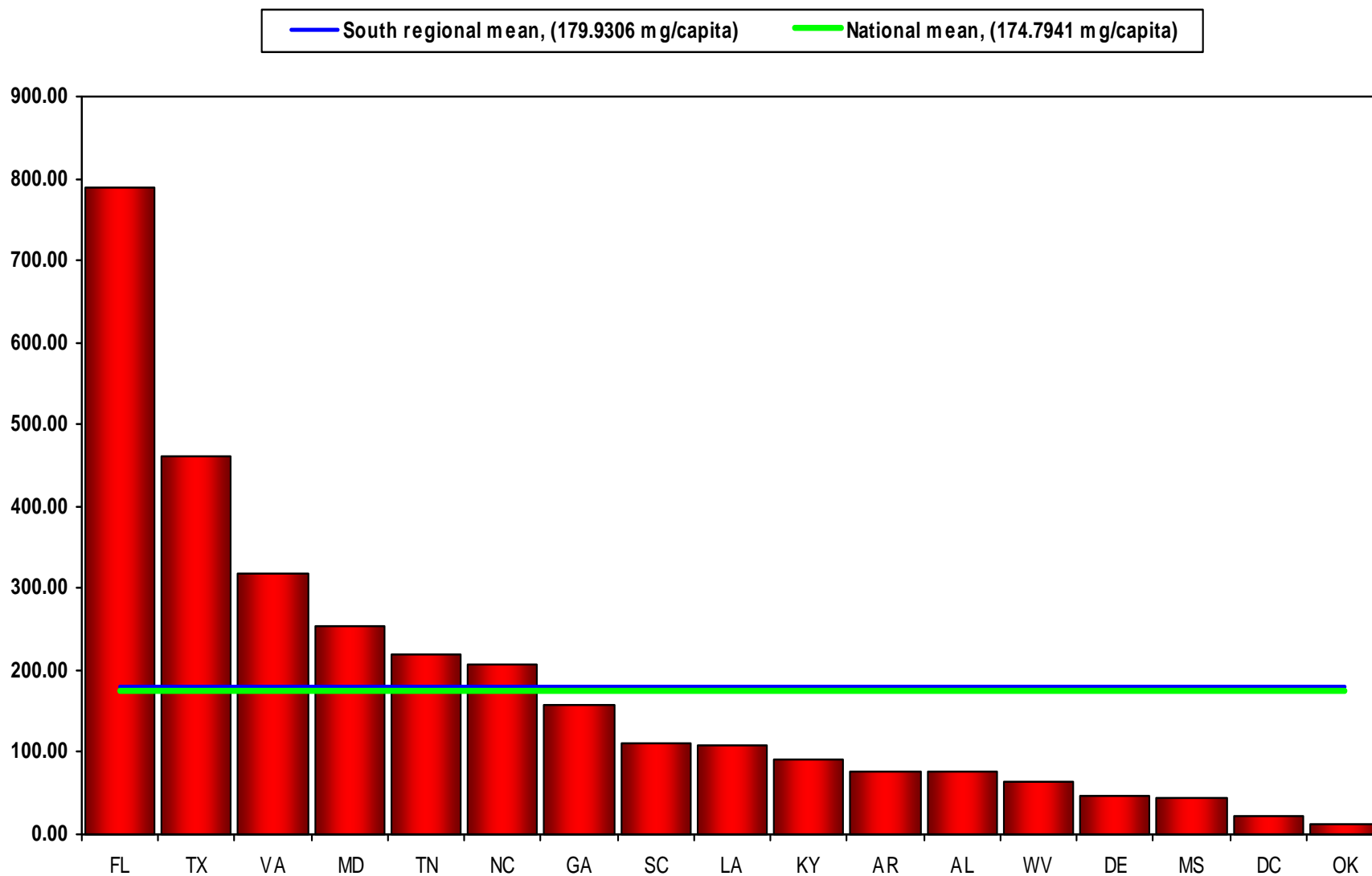
| | | |
|----|----------------------|-------------|
| 1 | Texas | 30,640.4364 |
| 2 | Florida | 22,888.2383 |
| 3 | Tennessee | 14,719.5562 |
| 4 | Kentucky | 9,259.7206 |
| 5 | Georgia | 9,133.9503 |
| 6 | Alabama | 8,931.4766 |
| 7 | North Carolina | 8,386.6563 |
| 8 | Louisiana | 8,009.8430 |
| 9 | Oklahoma | 6,357.4385 |
| 10 | South Carolina | 5,955.6394 |
| 11 | Virginia | 5,291.2747 |
| 12 | Mississippi | 4,194.9214 |
| 13 | Arkansas | 3,940.1942 |
| 14 | West Virginia | 3,741.5108 |
| 15 | Maryland | 2,435.2859 |
| 16 | Delaware | 408.8990 |
| 17 | District of Columbia | 131.2462 |

PAIN & POLICY STUDIES GROUP



WHO Collaborating Center for
Policy and Communications in Cancer Care
University of Wisconsin Paul P. Carbone
Comprehensive Cancer Center

South Regional Consumption of Hydromorphone, 2006



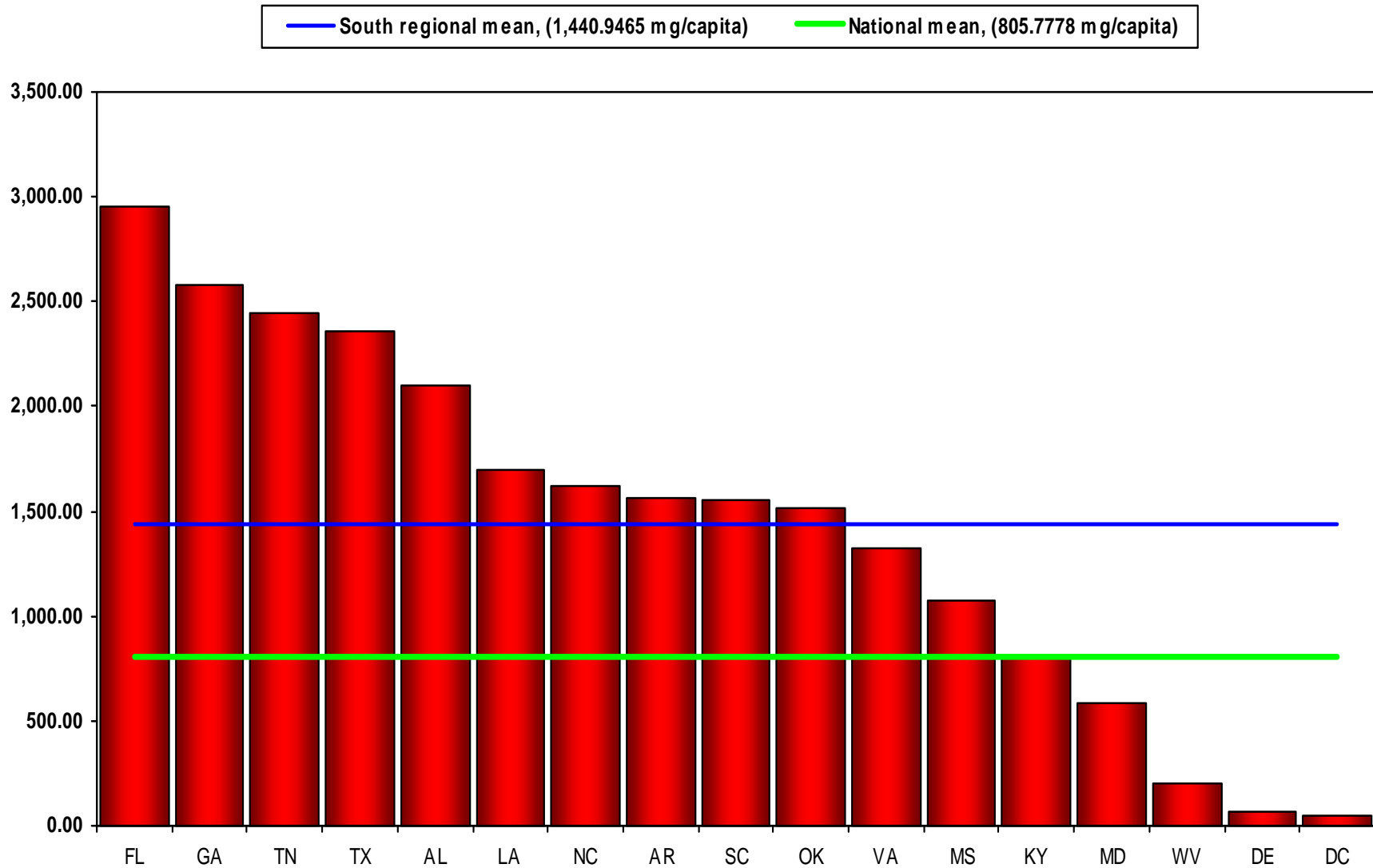
Source: U.S. Dept. of Justice, Drug Enforcement Administration, Office of Diversion Control
Pain & Policy Studies Group, 2008

South Regional HYDROMORPHONE Consumption, 2006: (mg/capita)

| | | |
|----|----------------------|----------|
| 1 | Florida | 789.3556 |
| 2 | Texas | 461.4899 |
| 3 | Virginia | 319.0886 |
| 4 | Maryland | 254.4248 |
| 5 | Tennessee | 218.5453 |
| 6 | North Carolina | 207.1811 |
| 7 | Georgia | 157.1075 |
| 8 | South Carolina | 110.8709 |
| 9 | Louisiana | 108.3306 |
| 10 | Kentucky | 91.2180 |
| 11 | Arkansas | 76.9539 |
| 12 | Alabama | 76.4290 |
| 13 | West Virginia | 62.9556 |
| 14 | Delaware | 47.5864 |
| 15 | Mississippi | 43.9413 |
| 16 | District of Columbia | 21.9856 |
| 17 | Oklahoma | 11.3561 |



South Regional Consumption of Meperidine, 2006



Source: U.S. Dept. of Justice, Drug Enforcement Administration, Office of Diversion Control
Pain & Policy Studies Group, 2008

South Regional MEPERIDINE Consumption, 2006: (mg/capita)

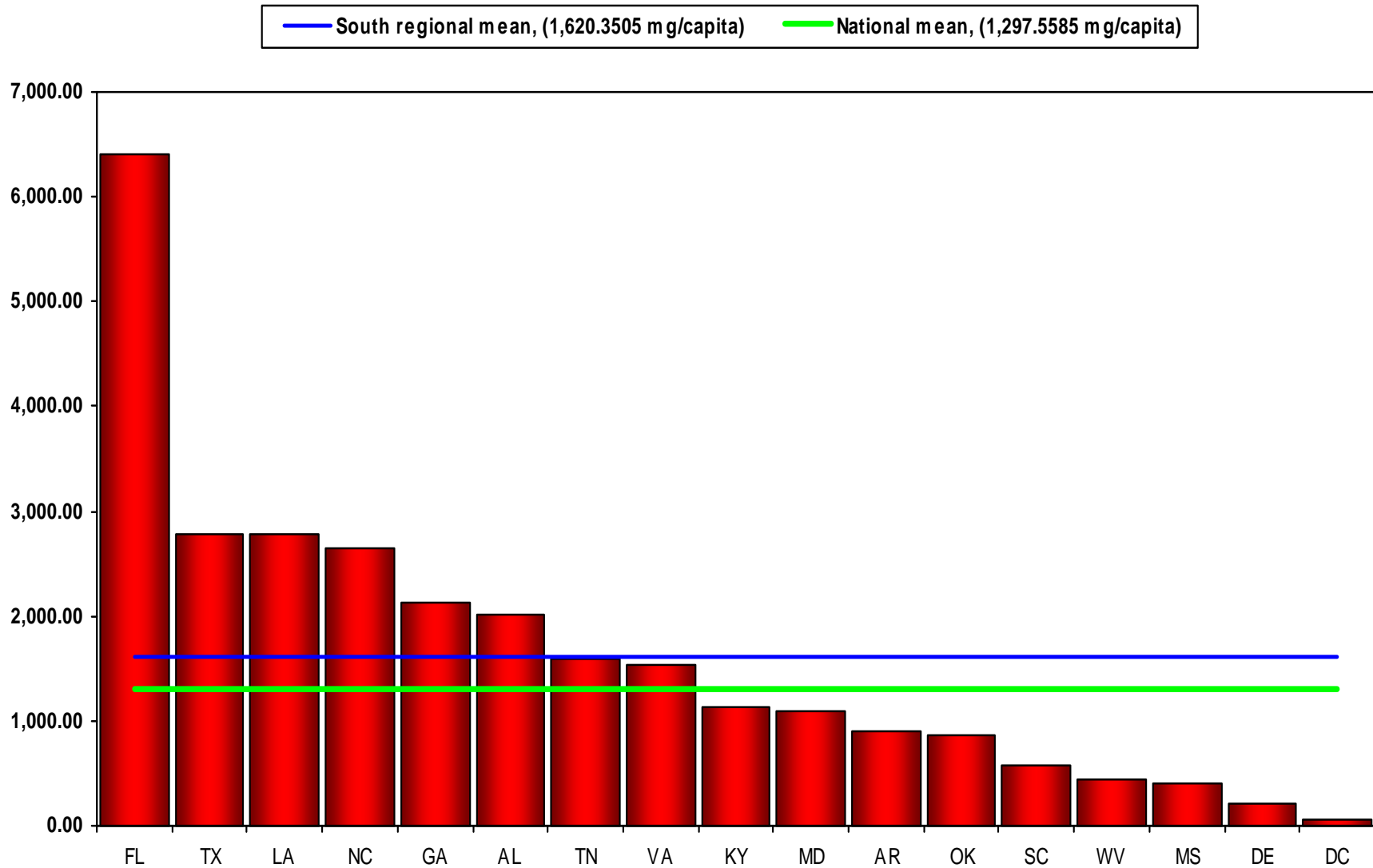
| | | |
|----|----------------------|------------|
| 1 | Florida | 2,950.4003 |
| 2 | Georgia | 2,579.8944 |
| 3 | Tennessee | 2,444.3900 |
| 4 | Texas | 2,358.2074 |
| 5 | Alabama | 2,104.3494 |
| 6 | Louisiana | 1,699.4101 |
| 7 | North Carolina | 1,621.6939 |
| 8 | Arkansas | 1,562.6493 |
| 9 | South Carolina | 1,558.1404 |
| 10 | Oklahoma | 1,515.4396 |
| 11 | Virginia | 1,320.9286 |
| 12 | Mississippi | 1,075.5592 |
| 13 | Kentucky | 800.8424 |
| 14 | Maryland | 586.6430 |
| 15 | West Virginia | 203.0236 |
| 16 | Delaware | 65.1863 |
| 17 | District of Columbia | 49.3325 |

PAIN & POLICY STUDIES GROUP



WHO Collaborating Center for
Policy and Communications in Cancer Care
University of Wisconsin Paul P. Carbone
Comprehensive Cancer Center

South Regional Consumption of Methadone, 2006



Source: U.S. Dept. of Justice, Drug Enforcement Administration, Office of Diversion Control
Pain & Policy Studies Group, 2008

South Regional METHADONE Consumption, 2006: (mg/capita)

| | | |
|----|----------------------|------------|
| 1 | Florida | 6,405.7769 |
| 2 | Texas | 2,781.6253 |
| 3 | Louisiana | 2,772.3023 |
| 4 | North Carolina | 2,642.9166 |
| 5 | Georgia | 2,137.1404 |
| 6 | Alabama | 2,008.4102 |
| 7 | Tennessee | 1,595.9237 |
| 8 | Virginia | 1,528.7498 |
| 9 | Kentucky | 1,134.5082 |
| 10 | Maryland | 1,099.3394 |
| 11 | Arkansas | 906.3484 |
| 12 | Oklahoma | 855.6526 |
| 13 | South Carolina | 576.8761 |
| 14 | West Virginia | 435.7853 |
| 15 | Mississippi | 401.1475 |
| 16 | Delaware | 202.4576 |
| 17 | District of Columbia | 60.9981 |

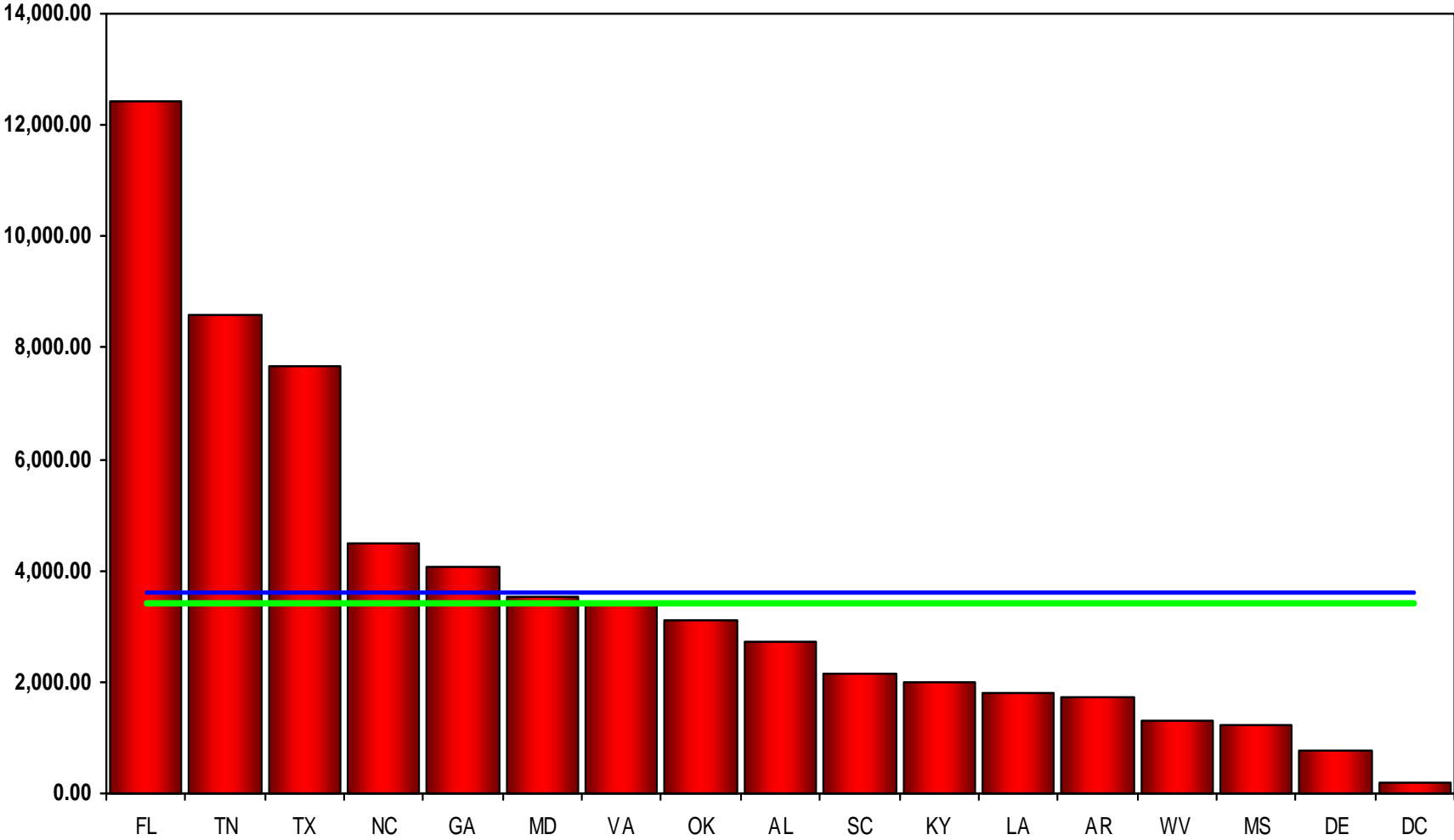
PAIN & POLICY STUDIES GROUP



WHO Collaborating Center for
Policy and Communications in Cancer Care
University of Wisconsin Paul P. Carbone
Comprehensive Cancer Center

South Regional Consumption of Morphine, 2006

— South regional mean, (3,594.3901 m g/capita) — National mean, (3,429.6144 m g/capita)



Source: U.S. Dept. of Justice, Drug Enforcement Administration, Office of Diversion Control
Pain & Policy Studies Group, 2008

South Regional MORPHINE Consumption, 2006: (mg/capita)

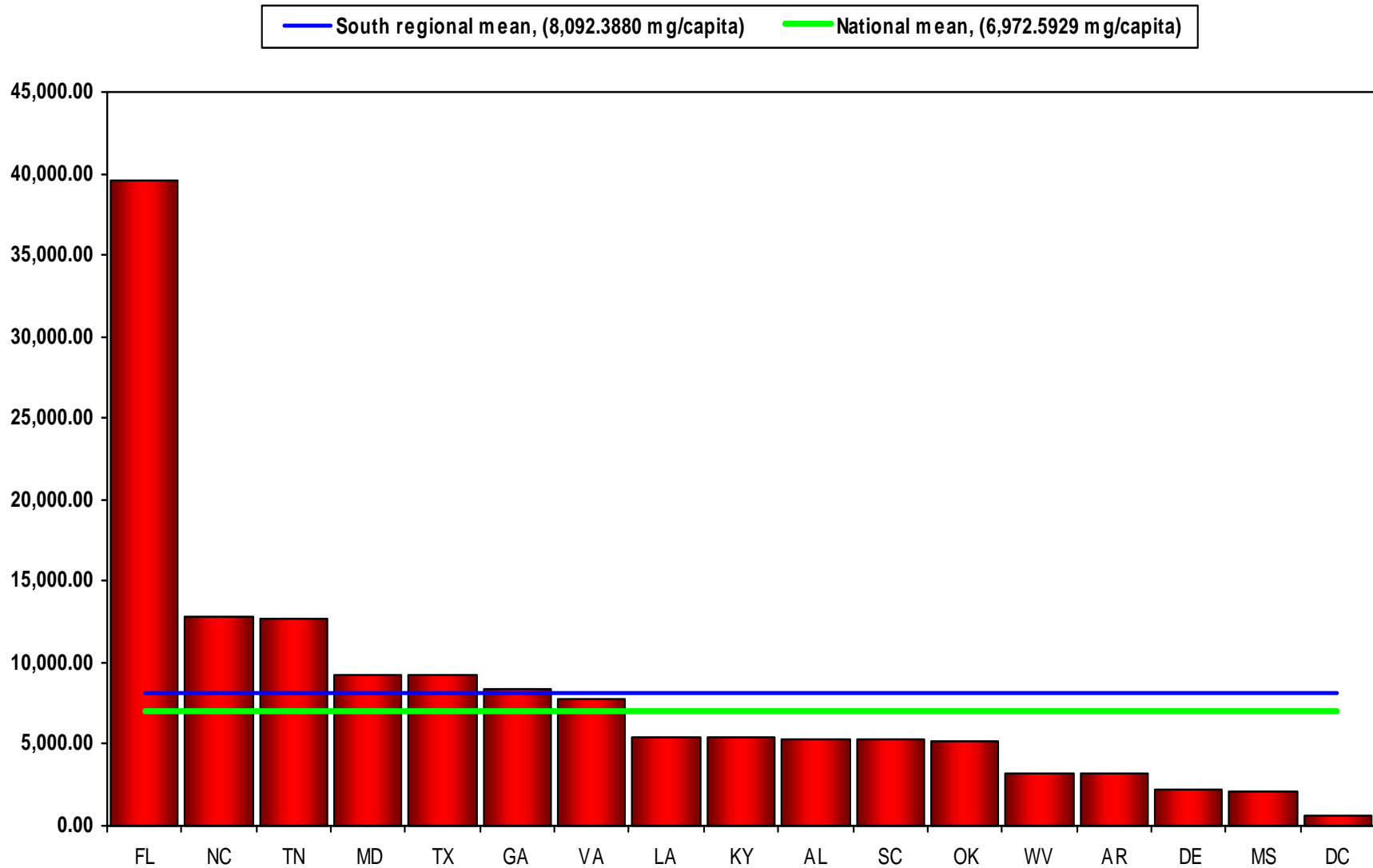
| | | |
|----|----------------------|-------------|
| 1 | Florida | 12,424.9462 |
| 2 | Tennessee | 8,588.0252 |
| 3 | Texas | 7,657.5935 |
| 4 | North Carolina | 4,505.3027 |
| 5 | Georgia | 4,081.2448 |
| 6 | Maryland | 3,524.7033 |
| 7 | Virginia | 3,383.6877 |
| 8 | Oklahoma | 3,090.2264 |
| 9 | Alabama | 2,708.1542 |
| 10 | South Carolina | 2,154.0709 |
| 11 | Kentucky | 1,990.0430 |
| 12 | Louisiana | 1,819.1389 |
| 13 | Arkansas | 1,723.7024 |
| 14 | West Virginia | 1,298.4156 |
| 15 | Mississippi | 1,211.0272 |
| 16 | Delaware | 753.2032 |
| 17 | District of Columbia | 191.1473 |

PAIN & POLICY STUDIES GROUP



WHO Collaborating Center for
Policy and Communications in Cancer Care
University of Wisconsin Paul P. Carbone
Comprehensive Cancer Center

South Regional Consumption of Oxycodone, 2006



Source: U.S. Dept. of Justice, Drug Enforcement Administration, Office of Diversion Control
Pain & Policy Studies Group, 2008

South Regional OXYCODONE Consumption, 2006: (mg/capita)

| | | |
|----|----------------------|-------------|
| 1 | Florida | 39,587.9774 |
| 2 | North Carolina | 12,860.3044 |
| 3 | Tennessee | 12,645.5461 |
| 4 | Maryland | 9,251.3763 |
| 5 | Texas | 9,222.0850 |
| 6 | Georgia | 8,441.9580 |
| 7 | Virginia | 7,814.1609 |
| 8 | Louisiana | 5,463.1283 |
| 9 | Kentucky | 5,381.5976 |
| 10 | Alabama | 5,330.2522 |
| 11 | South Carolina | 5,241.1477 |
| 12 | Oklahoma | 5,123.3469 |
| 13 | West Virginia | 3,160.0318 |
| 14 | Arkansas | 3,159.9160 |
| 15 | Delaware | 2,274.8132 |
| 16 | Mississippi | 2,054.3481 |
| 17 | District of Columbia | 558.6066 |

