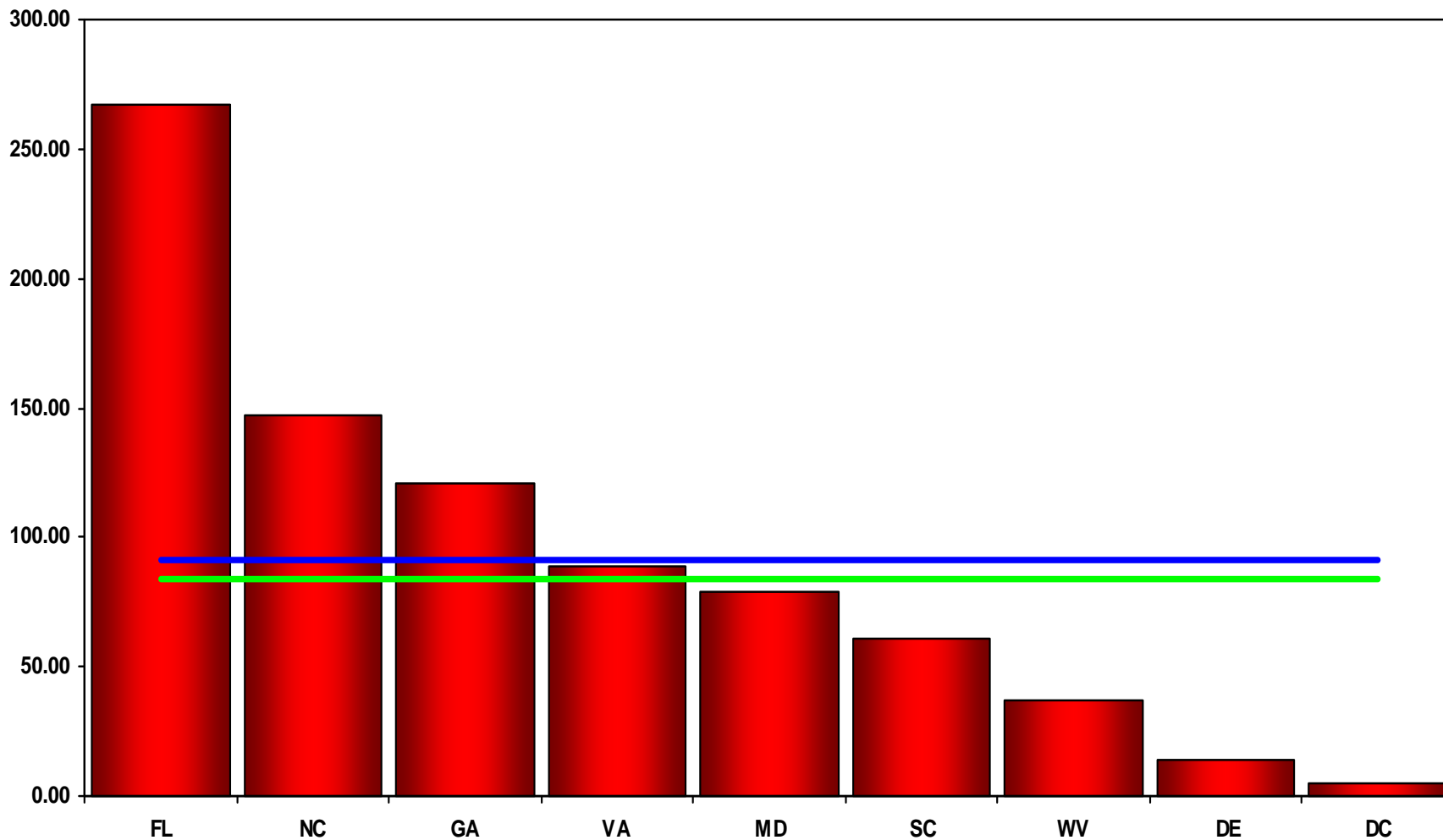


South Atlantic Division Consumption of Fentanyl, 2006

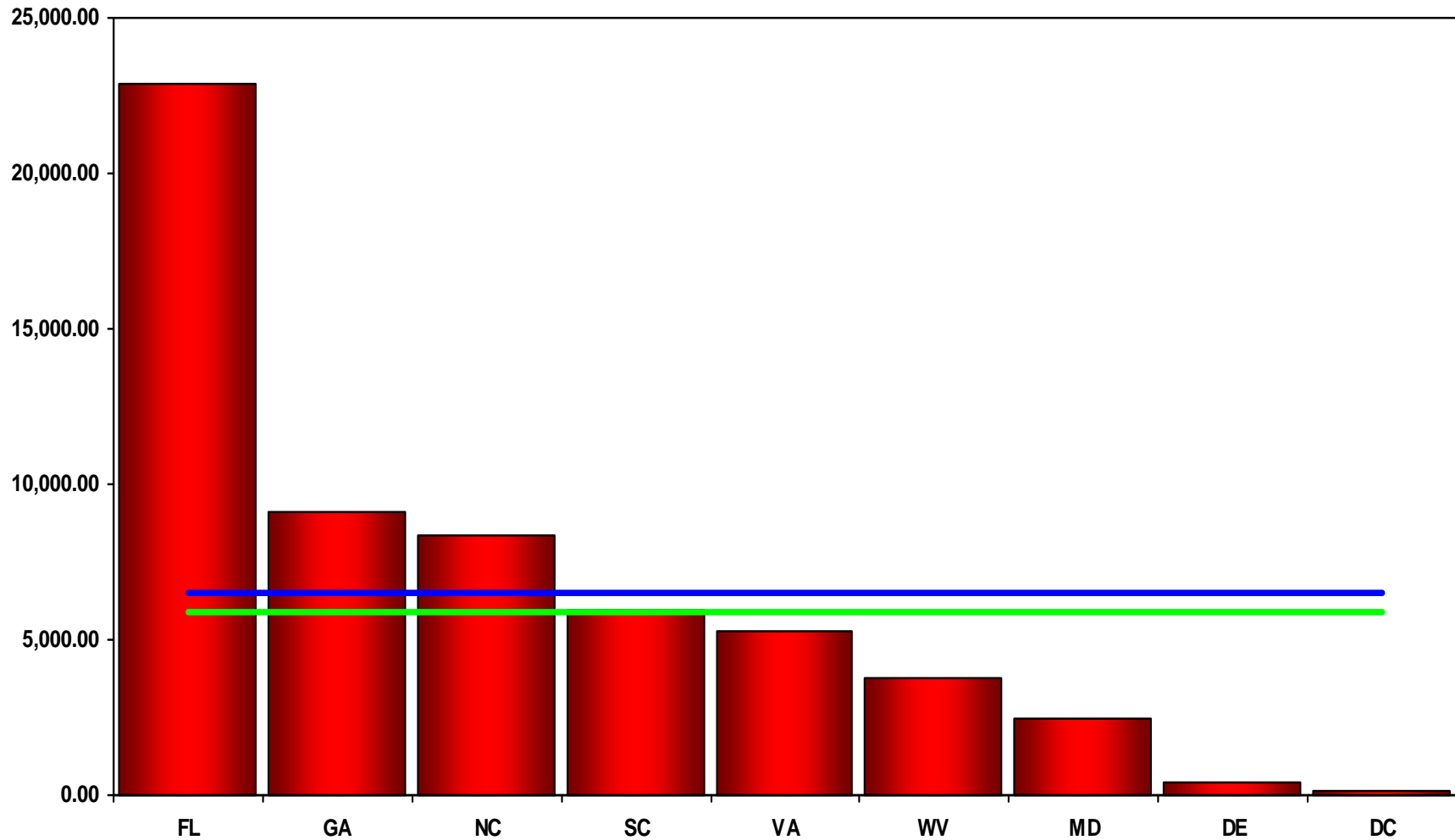
— Divisional mean, (90.9746 mg/cap) — National mean, (83.9487 mg/capita)



Source: U.S. Dept. of Justice, Drug Enforcement Administration, Office of Diversion Control
Pain & Policy Studies Group, 2008

South Atlantic Division Consumption of Hydrocodone, 2006

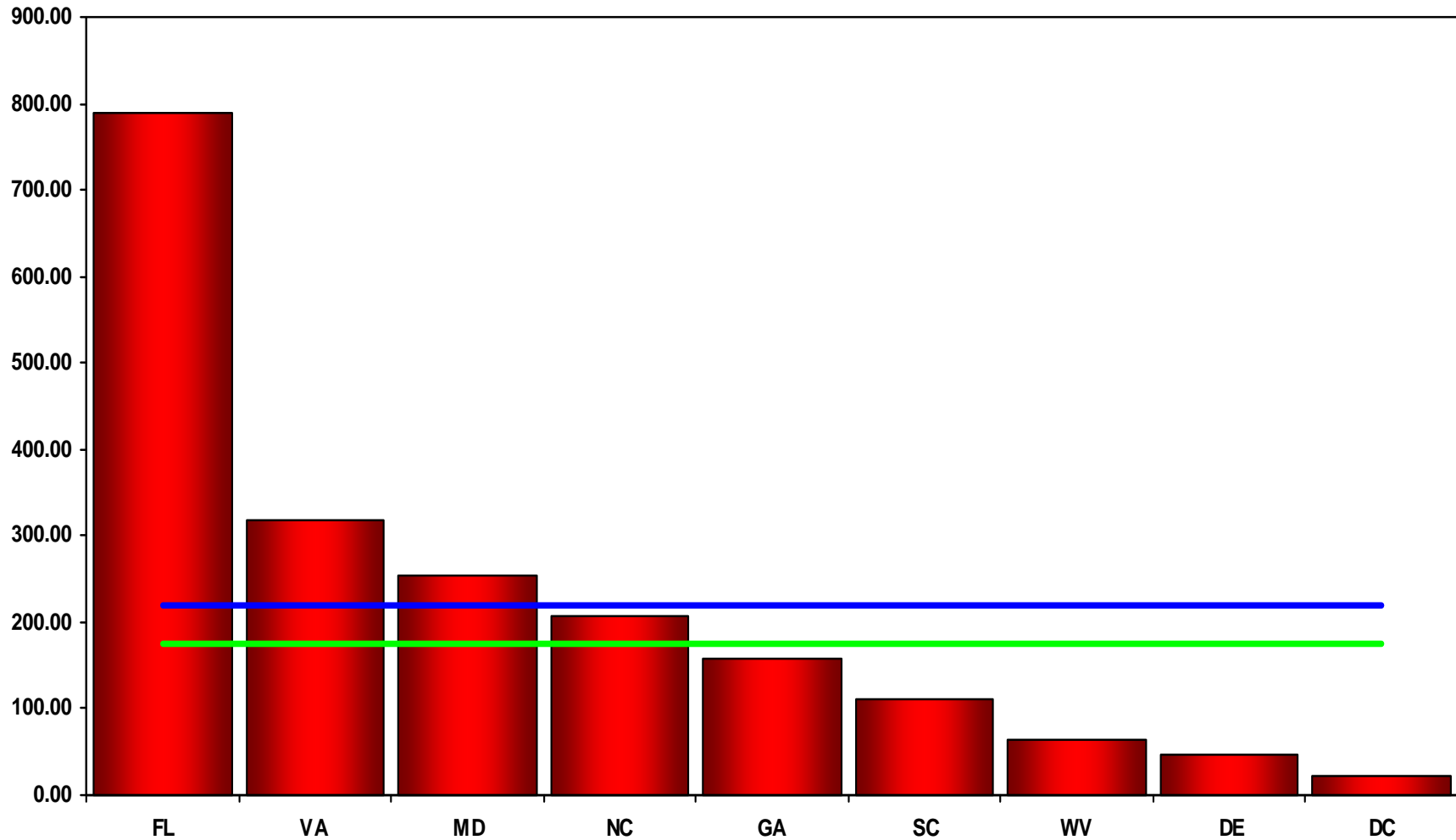
— Divisional mean, (6,485.8556 mg/capita) — National mean, (5,867.4595 mg/capita)



Source: U.S. Dept. of Justice, Drug Enforcement Administration, Office of Diversion Control
Pain & Policy Studies Group, 2008

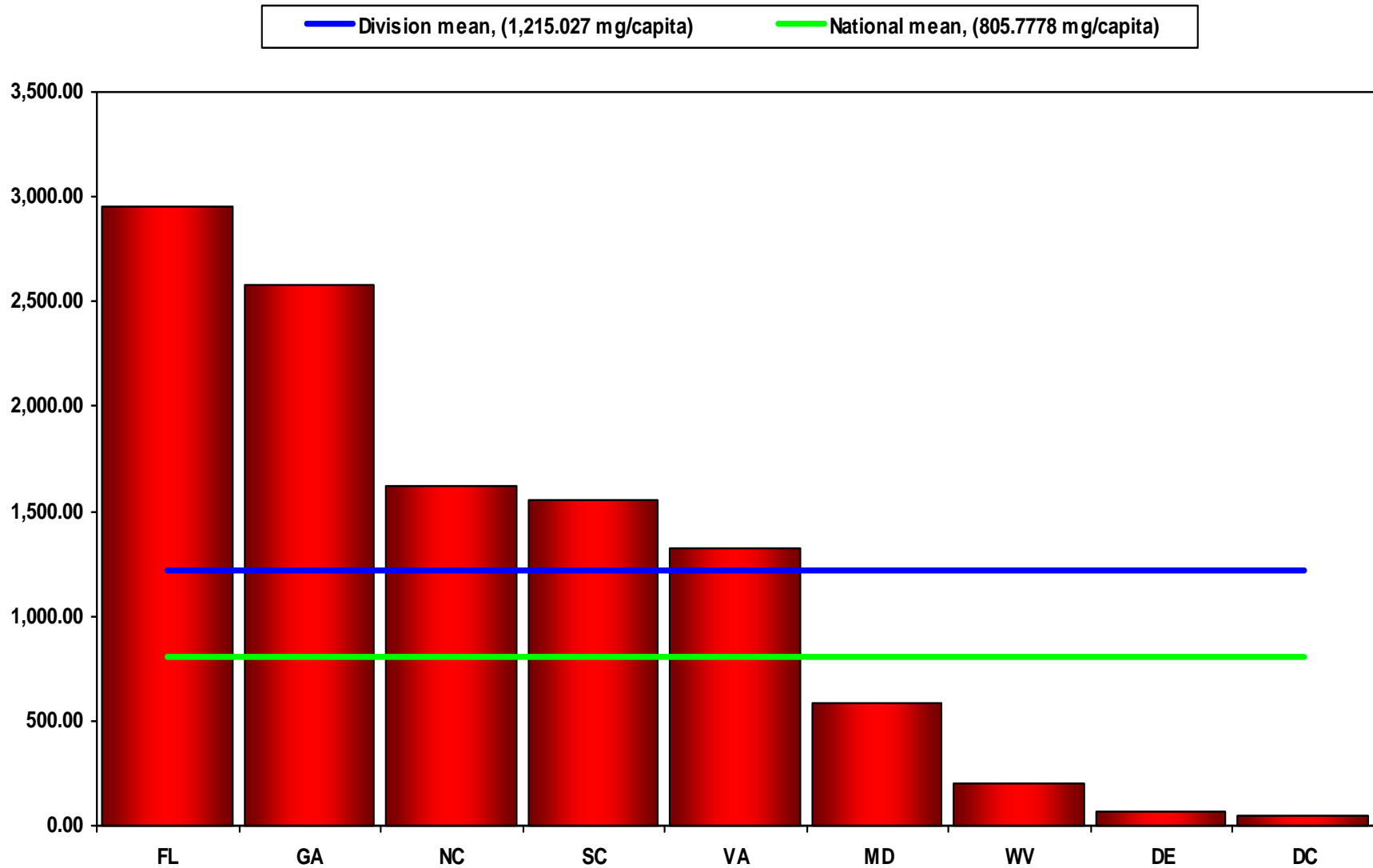
South Atlantic Division Consumption of Hydromorphone, 2006

— Division mean, (218.9507 mg/capita) — National mean, (174.7941 mg/capita)



Source: U.S. Dept. of Justice, Drug Enforcement Administration, Office of Diversion Control
Pain & Policy Studies Group, 2008

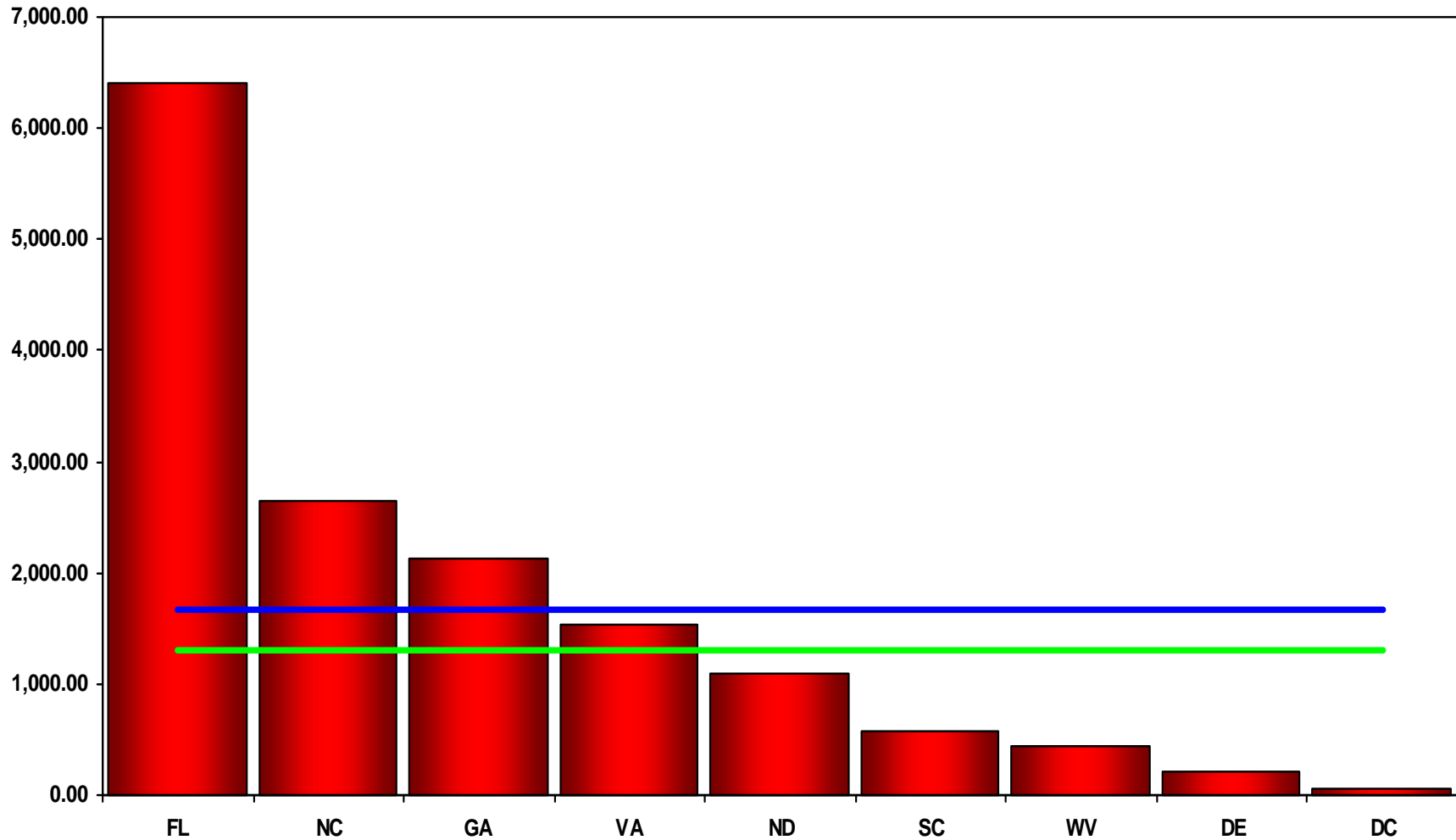
South Atlantic Division Consumption of Meperidine, 2006



Source: U.S. Dept. of Justice, Drug Enforcement Administration, Office of Diversion Control
Pain & Policy Studies Group, 2008

South Atlantic Division Consumption of Methadone, 2006

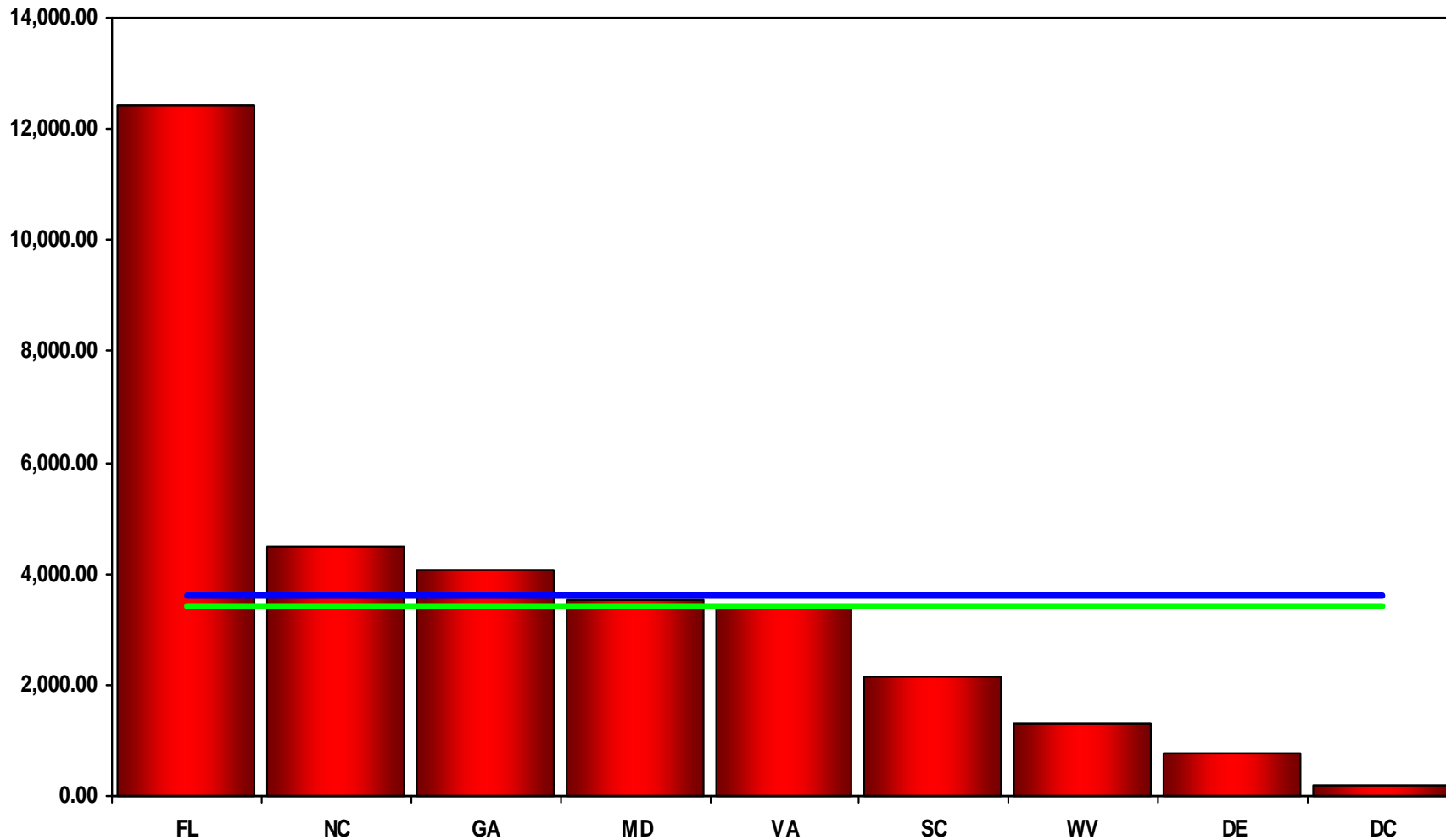
— Division mean, (1,676.6711 mg/capita) — National mean, (1,297.5585 mg/capita)



Source: U.S. Dept. of Justice, Drug Enforcement Administration, Office of Diversion Control
Pain & Policy Studies Group, 2008

South Atlantic Division Consumption of Morphine, 2006

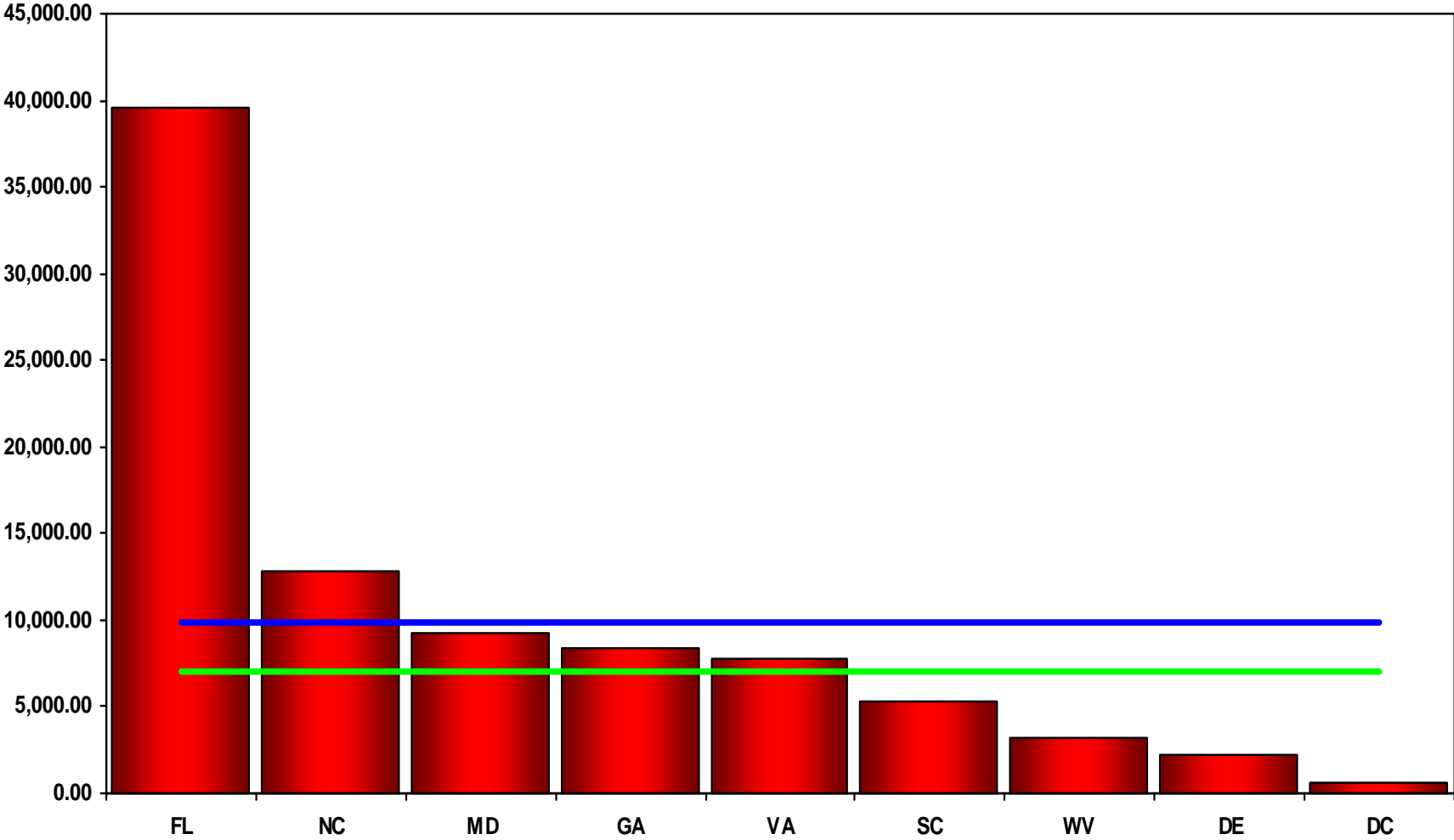
— Division mean, (3,590.7468 mg/capita) — National mean, (3,429.6144 mg/capita)



Source: U.S. Dept. of Justice, Drug Enforcement Administration, Office of Diversion Control
Pain & Policy Studies Group, 2008

South Atlantic Division Consumption of Oxycodone, 2006

— Division mean, (9,910.0418 mg/capita) — National mean, (6,972.5929 mg/capita)



Source: U.S. Dept. of Justice, Drug Enforcement Administration, Office of Diversion Control
Pain & Policy Studies Group, 2008